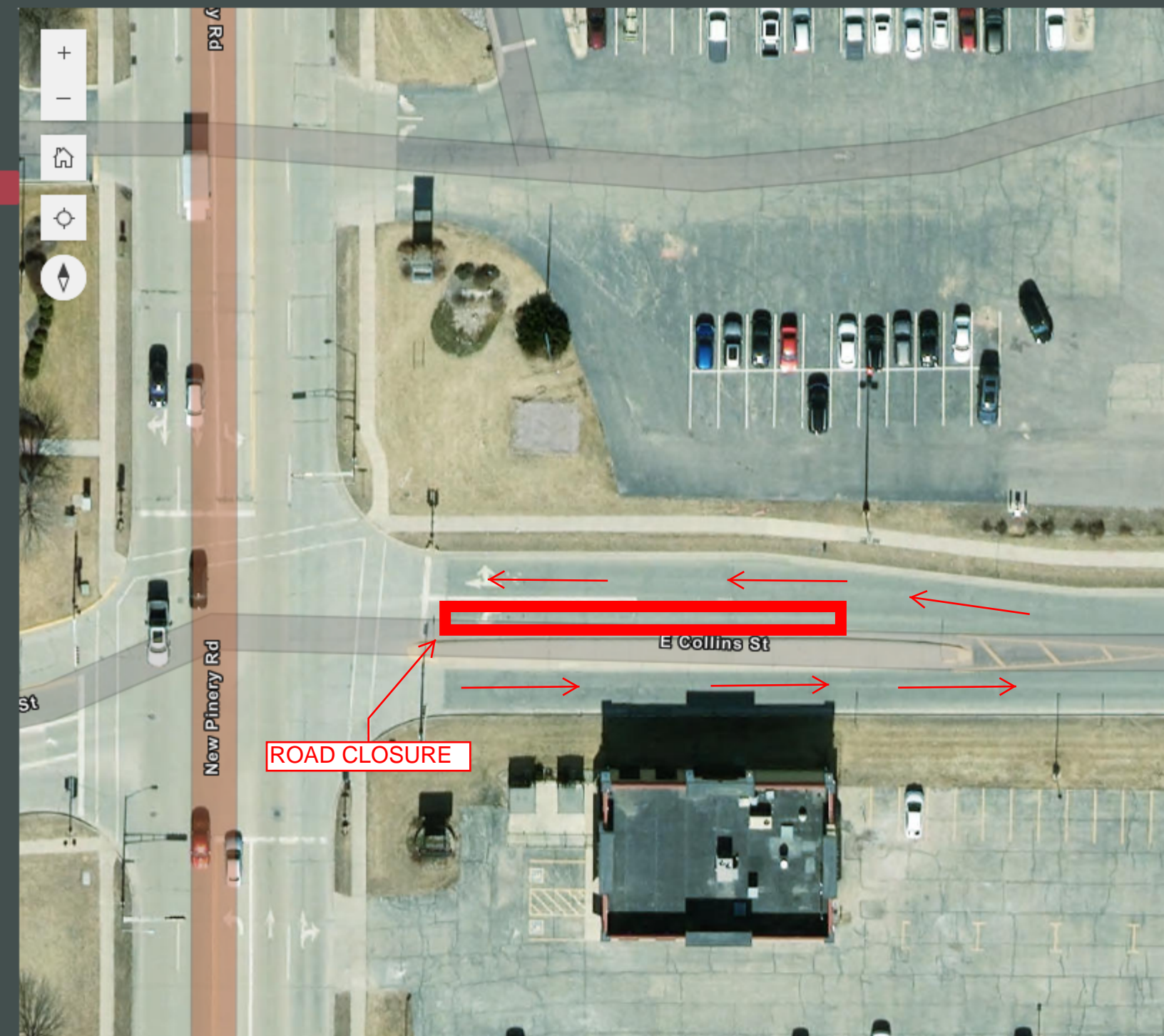


PHASE 1 ROAD CLOSURE - WEDNESDAY, SEPTEMBER 10  
 APPROXIMATE DURATION, 8:30AM-2:30PM  
 TRAFFIC TO REMAIN OPEN IN BOTH DIRECTIONS



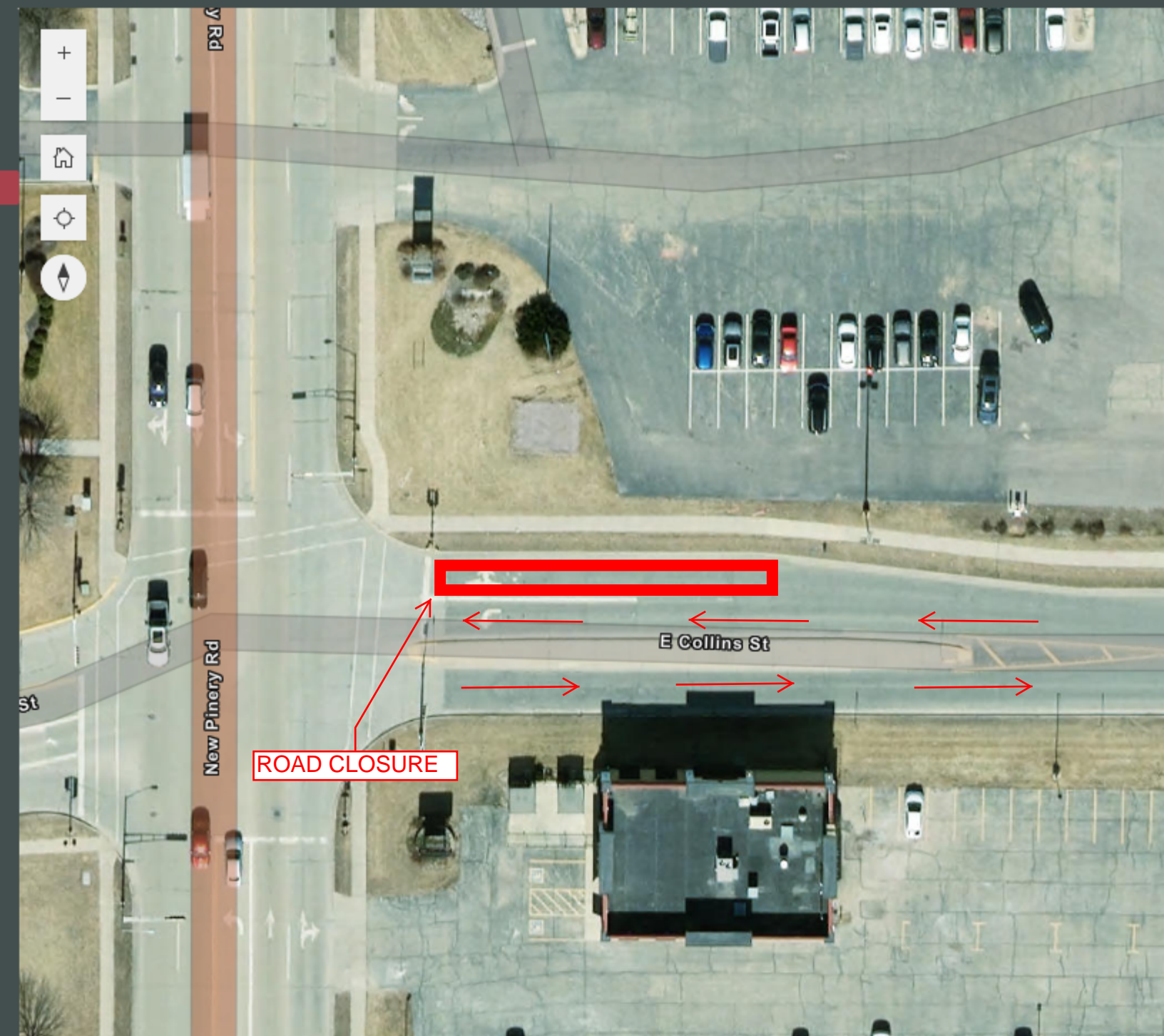
ROAD CLOSURE

E Collins St

New Pinery Rd

PHASE 2 ROAD CLOSURE - THURSDAY, SEPTEMBER 11  
APPROXIMATE DURATION, 8:30AM-2:30PM  
TRAFFIC TO REMAIN OPEN IN BOTH DIRECTIONS





PHASE 3 ROAD CLOSURE - FRIDAY, SEPTEMBER 12  
 APPROXIMATE DURATION, 8:30AM-2:30PM  
 TRAFFIC TO REMAIN OPEN IN BOTH DIRECTIONS